

# Tips for Improved Adhesion

The following options may help your patients if they experience adhesion challenges with the CAM® Patch.

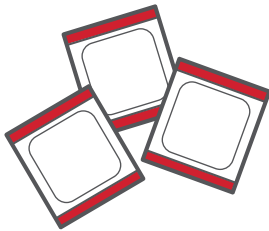
Option  
1

## Application of Liquid Adhesives

To help prepare the skin and facilitate optimized adhesion for extended monitoring, consider using a liquid adhesive from the following product options: \*

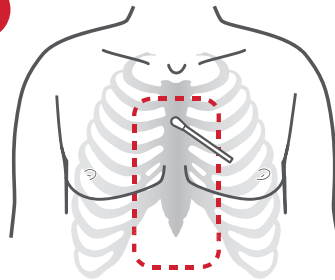
- **Skin-Tac™**  
Wipes or Liquid
- **Mastisol®**  
Liquid Adhesive
- **Aplicare®**  
Compound Benzoin Tincture Swabsticks

1



Prepare and clean the skin with the 3 electrode prep pads provided in the CAM Mailer Box and allow skin to dry for at least 2 minutes per CAM Instructions for Use.

2



Following the manufacturer's instructions, apply a thin layer of liquid adhesive on sternal area where CAM Patch will be placed.

**Caution: Do not use any other prep pads or substances on the skin after applying the liquid adhesive**

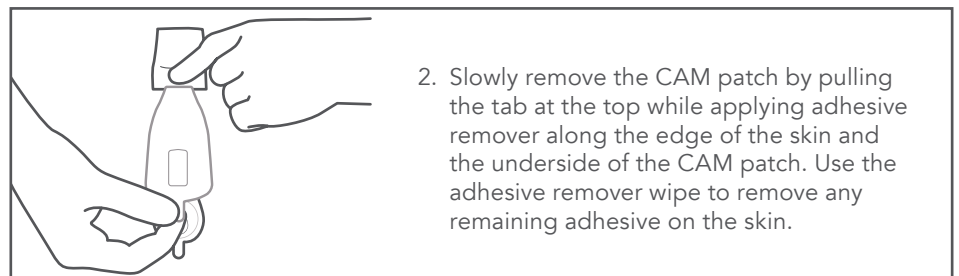
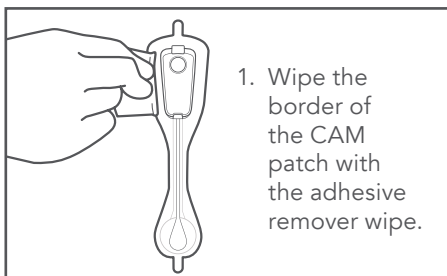
3



Allow adhesive to dry at least 30 seconds\* before applying the CAM Patch per CAM Instructions for Use.

## Removal of CAM Patch with Liquid Adhesives

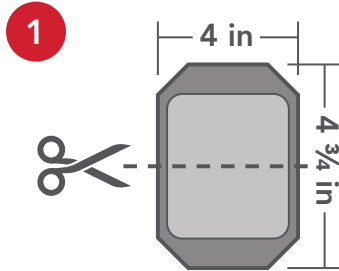
The provided Adhesive Remover Wipe Pad may be used to aid in removal of the CAM Patch.



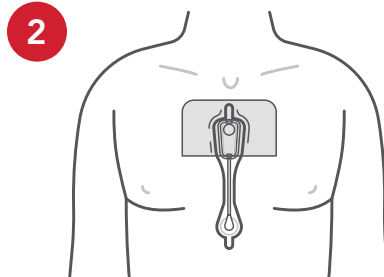
## Application of Adhesive Film

Another option to consider for adhesion challenges with the CAM Patch, is using 3M™ Tegaderm™ film.\*

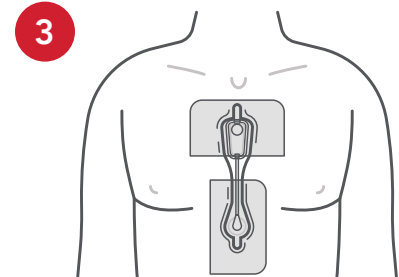
### How to apply 3M Tegaderm Film (4 in x 4 ¾ in)



- 1.1 Open package and cut the film in half (cut through the 4 ¾ in side).



- 2.1 Take one half and peel away the printed liner from the paper-framed dressing.
- 2.2 Position the longest side horizontally over the top of the CAM Recorder, ensuring contact with skin above the device.
- 2.3 **Do not stretch** the film when applying. Starting on one side of the Recorder, carefully form the film over the Recorder to the opposite side.
- 2.4 Press and rub to secure adhesion.
- 2.5 Remove the paper frame and rub along the edges.



- 3.1 Take the other half and remove the printed liner.
- 3.2 Rotate it 90 degrees and position the longer side vertically at the bottom of the CAM Patch.
- 3.3 Press and rub to secure adhesion.
- 3.4 Remove the paper frame and rub along the edges.

### Removal of Adhesive Film

1. Grasp one edge or corner of the 3M Tegaderm film and gently lift it.
2. Gently stretch the Tegaderm film parallel to skin.
3. As the Tegaderm film begins to lift, place the fingers of your other hand on the skin under the Tegaderm to keep the skin from lifting/stretching with the film. "Walk" your fingers under the film to continue supporting the skin until the Tegaderm has released from the skin.
4. When removing the CAM Patch, please refer to the Patient Diary for complete instructions.

\*Always reference manufacturer IFU or user guide for Warnings, Cautions and appropriate application instructions. Apply per your institutional protocol. **If considering use of a liquid adhesive or tape refer to the cautions and warnings in the product's Instructions for Use, particularly the allergy warnings prior to application.**

Skin-Tac is a trademark of Torbot. Mastisol is a registered trademark of Ferndale Laboratories. Apicare is a registered trademark of Medline. Tegaderm is a trademark of 3M.

DWG000682B 06/24